



ELECTRICAL ENCLOSURES FIRE SUPPRESSION SYSTEM



**Marketing Office :-  
Aswin Electronik**

First Floor, X/14-A,  
Manjummel, Ugyogamandal P.O.,  
Ernakulam Dist.  
Mob: +91 93499 25666  
sales.aswinelectronik@gmail.com

TURN KEY SOLUTIONS FOR  
ELECTRICAL PANELS  
WITH INTEGRATED FIRE SUPPRESSION SYSTEM










## Electrical Enclosures & Panel Protection Technology

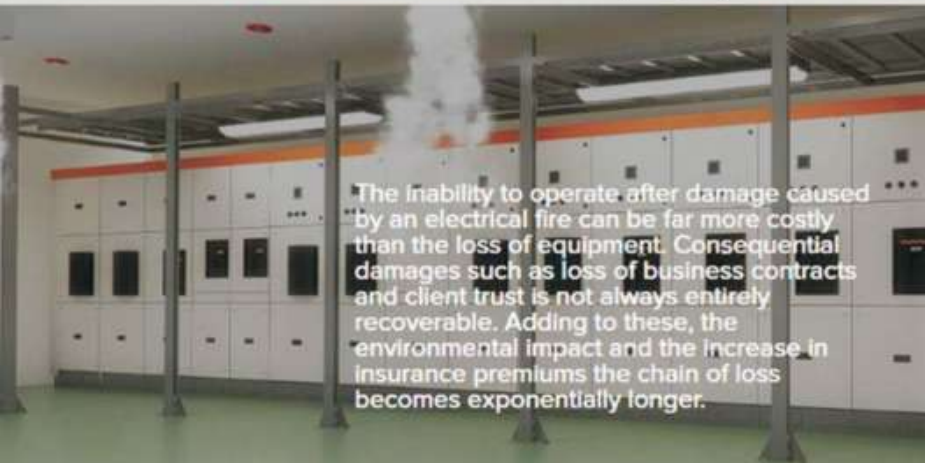
AEW offers autonomous fire suppression systems for the protection of electrical cabinet internally, against fire Hazards. Fire is detected and suppressed at a very early stage inside the cabinet - prevent its spread.

### AEW Technology Advantages

AEW offers a dependable and autonomous electrical cabinet fire suppression system that can be factory integrated with all our electrical control panels. AEW technology detects and suppresses fire inside the cabinet at a very early stage after its initiation. Fire is detected and extinguished speedily, thus preventing its spread to adjacent equipment. The benefit is equally crucial for premises equipped with water sprinklers since the activation is typically avoided along with any associated collateral side-effects.

### Technology Benefits:

-  Reliable & Cost Effective Protection
-  Choice of Linear heat or Automatic smoke detection
-  Offering a Pre-Engineered and Fully Integrated System
-  Optional Hybrid Power Supply option
-  Fall Monitoring Status
-  Option to connect up to Four FirePro Units
-  Always with FirePro's Environmentally Friendly Agent



The inability to operate after damage caused by an electrical fire can be far more costly than the loss of equipment. Consequential damages such as loss of business contracts and client trust is not always entirely recoverable. Adding to these, the environmental impact and the increase in insurance premiums the chain of loss becomes exponentially longer.

### FIRE HYDRANT PUMP CONTROL PANEL

Fire Fighting Panel (jockey, main and engine control) in compliance with international standards of quality. Designed as per the specifications of clients, we provide them with qualitative fire hydrant system that is an effective and efficient means of extinguishing large fire. In all panels for each starter the following shall be provided with BMS connectivity for Potential free contact for A/M switch, and A/M switch itself, to Accept PFC from BMS for start/stop, PFC for run status to BMS & PFC for Trip Status to BMS.)

Remote indication and control panel are also provided as per client requirement for remote operation mainly from control room. In cases where EB and DG power supply are provided we can integrate fully automatic change over switch where system controller can decide to use DG or EB power supply and to use main or standby pump or engine driven pump fully automatically for an uninterrupted fast firefighting operation.



### AUTOMATIC POWER FACTOR CONTROL

We manufacture and provide energy efficient APFC Panels (Automatic Power Factor Control Panels), that are especially designed to save electricity. This panel consists of a power factor controller that monitors accurately the reactive power in power system in order to save energy.

### PLC BASED CONTROL PANEL

We offer superior quality of PLC based control panels and Electrical hardware base control panels. These Control panels are designed as per end user requirement. We undertake turnkey project with field instrumentation & PLC Interface.

#### APPLICATION:

- Power plant
- Industrial plant.
- STP plant



### AMF PANEL

Auto mains failure panel, also known as AMF panel, are used to automatically changeover from mains electricity supply to stand-by generator or genset on failure of the mains supply. When the mains supply is restored, the system automatically changes back and stops the genset.



### Remote Control Desk

Remote Control panel is the best way to operate a panel from a remote or different location.

### Power Distribution Panels

A distribution board (also known as panel board, breaker panel, or electric panel) is a component of an electricity supply system that divides an electrical power feed into subsidiary circuits, while providing a protective fuse or circuit breaker for each circuit in a common enclosure.



# Making Electrical Panels Fire Safe...

## AEW INTEGRATED FIRE SUPPRESSION SYSTEM FOR ELECTRICAL PANEL

In the AEW Integrated Fire System With Linear Pneumatic Heat Detection Tube as 'Direct' Gas Flooding System For Electric Panels.

This system is used to protect small compartments or micro-environments. Engine compartments and electrical panels where these type of system would provide protection from fire.

Our Fire suppression Systems available in two Configurations:

- Direct Suppression System.
- Indirect Suppression System.

### 1. Direct Suppression System

In a Direct Suppression System its automatically detect and the suppressant will come through the hole in the tube directly.



### 2. Indirect Suppression System

In an Indirect Suppression System is when the tube acts as a detection device and, through the pressure change, tells the system to discharge the agent through other pipes and nozzles.

The electrical panel fire suppression system shall be complete with Direct Clean Gas storage cylinders for required capacities, extinguishing agent as specified, linear Fire Finder tubing, filling and end-of-line adaptors, pressure switches, control equipment and all necessary accessories and push on fittings to form a complete and working installation to protect the Electrical panel in case of fire.



#### Head Office :-

419, Diamond Industrial Estate  
Ketkipada Road, Dahisar (E)  
Mumbai - 400068, India.  
Mob: 9562969015 | 9820328005  
aswinelectronik@gmail.com  
www.aswinelectronik.com